

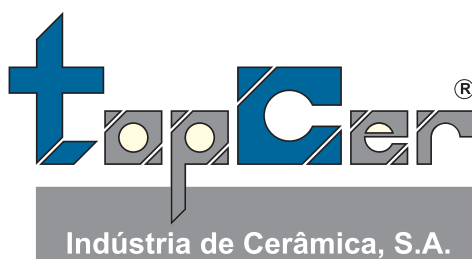
---

# The Choice of Architects

---



C-Mine - Genk, Belgium



ISO 9001 & ISO 14001 Certified

34 YEARS OF  
EXCELLENCE

---

The Choice of Architects

---

# T o p C e r

## Sustainability & Environmental Statement

---

TopCer has long been committed to environmentally friendly operations in the design, manufacturing, and distribution of unglazed porcelain wall and floor tiles. TopCer ensures sustainability along production processes in accordance with standards and legal requirements, while ensuring we meet clients' needs and expectations.

Environmental awareness is present throughout the entire lifecycle of TopCer products (please see our [Environmental Product Declaration](https://topcer.com/general_data.php) at our website [https://topcer.com/general\\_data.php](https://topcer.com/general_data.php) namely:

- Adoption of best practices in environmental management for continuous improvement and pollution prevention, thereby reducing environmental impact;
- Assuring that all raw materials used in the production process come from environmental conscious suppliers, preferably from suppliers with environmental certification;
- Committing ourselves to reducing energy consumption in all stages of our product life cycle;
- Ensuring that the sludge from water waste treatment and crushed porcelain pieces generated in our manufacturing process are re-used by a licensed waste operator in the production of structural ceramics as these residues, due to the technical characteristics of unglazed porcelain tiles, cannot be reintegrated into the production process;
- We encourage the recycling of various types of waste in the main production areas where they are produced, by disposal bins with appropriate labeling, in order to support and perform the separation of several types of plastic, cardboard and paper, paper and plastic cups, wood, etc. Assuring that the recycling of each type of waste occurs through licensed organizations specialized in respective fields.

TopCer Environmental Management System is certified by ISO 14001, and TopCer Quality Management System by ISO 9001.



TopCer 2 warehouses, are covered by 1036 photovoltaic solar panels



# TopCer

TopCer is an established worldwide brand, founded in 1991 by Mr. Carlos Miguel, a renowned figure in the world of ceramics. Known for the quality of its unique and innovative products, TopCer specializes in the manufacturing of unglazed porcelain tiles in small modular sizes — 10x10, 7.5x15, 15x15, and 10x30 — available in various textures and shapes.

These are complemented by a considerable range of matching trim pieces (49 in total), all offered in 30 colors.

Through continuous research into traditional sizes, components, and patterns used over the past two centuries, TopCer developed the "Victorian Designs and Borders" and "Contemporaneous Series" collections.

These collections combine traditional and modern innovative designs, mounted on back-mesh in modular sheets.

This has led to the development of specific niche markets in certain regions, making them ideal for use in palaces, museums,

hotels, restaurants, pubs, cruise ships, private homes, and the restoration of historic floors.

The TopCer range is one of the most versatile product lines available.

Manufactured from through-body unglazed porcelain of exceptional quality, it features a wide variety of colors and shapes, making it a designer's playground.

Supported by an extensive selection of trim pieces and technical anti-slip finishes, the TopCer range is suitable for numerous applications, offering both aesthetic appeal and superior functionality.

TopCer tiles are highly valued for their exceptional durability, featuring high breaking strength, frost resistance, wear resistance, and non-slip properties.

As a result, they are widely used in a variety of demanding environments, ensuring both longevity and outstanding performance.

*Merit, Excellence and Leadership*  
award winner

**PME líder since 2008**



**PME líder'24**

**PME excelência since 2011**



**excelência'23**

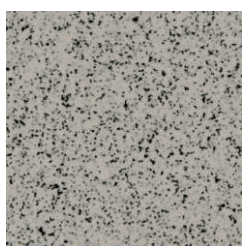




# Colour Range



01



02



03



04



05



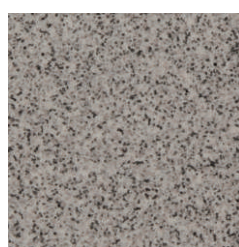
06



07



08



09



10



11



12



13



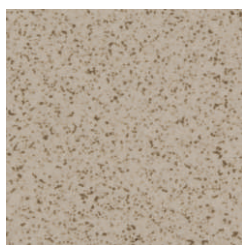
14



15



16



17



18



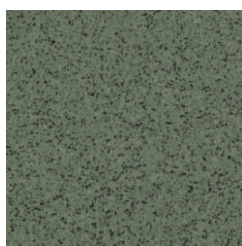
19



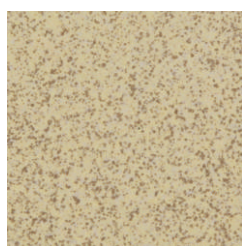
20



21



22



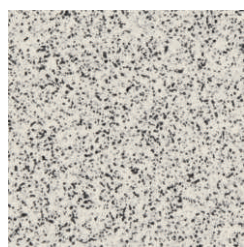
23



24



25



26



27



28



29












30

Colour's accuracy is limited by the print of this catalogue.



# Stock Availability

[standard thickness 8 – 8.5 mm]

			SIZES								
			RC		DD		RT		SS		
			10x10	10x10	10x10	10x10	10x10	10x10	10x10	10x10	10x10
											
SERIES	COLOURS		15x15	15x15	15x15	15x15	15x15	OCT	HEX	7.5x15	10x30
Series 1	01	Beige	●	●	●	●	●	●	●	●	●
	02	Speckled Grey	●	●	●	●	●	○	○	○	○
	03	Yellow	●	●	●	●	●	●	●	●	●
	05	Old Rose	●	●	●	●	●	●	●	●	●
	06	Light Grey (Brown.)	●	●	●	●	●	●	●	●	●
	08	Granite Rose	●	●	●	●	●	○	○	○	○
	09	Granite Grey	●	●	●	●	●	○	○	○	○
	17	Speckled Brown	●	●	●	●	●	○	○	●	●
Series 2	10	Granite Burgundy	●	●	●	●	●	○	○	○	○
	24	Speckled Black/White	●	●	●	●	●	○	○	●	●
Series 3	07	Light Grey (Blue)	●	●	●	●	●	●	●	●	●
	12	Granite Blue	●	●	●	●	●	○	○	○	○
	14	Black	●	●	●	●	●	●	●	●	●
	19	Pink	●	●	●	●	●	●	●	●	●
	20	Brick-red	●	●	●	●	●	●	●	●	●
	21	Ochre Yellow	●	●	●	●	●	●	●	●	●
	22	Granite Green	●	●	●	●	●	○	○	○	○
	28	Light Green	●	●	●	●	●	●	●	●	●
	30	Dark Grey	●	●	●	●	●	●	●	●	●
Series 4	04	Caramel	●	●	●	●	●	●	●	●	●
	13	Turquoise	●	●	●	●	●	●	●	●	●
	15	Medium Grey	●	●	●	●	●	●	●	●	●
	16	White	●	●	●	●	●	●	●	●	●
	26	Speckled White	●	●	●	●	●	○	○	○	●
	27	Light Blue	●	●	●	●	●	●	●	●	●
	29	Coffee Brown	●	●	●	●	●	●	●	●	●
Series 5	11	Blue (Cobalt)	●	●	●	●	●	●	●	●	●
	18	Dark Green	●	●	●	●	●	●	●	●	●
	23	Speckled Yellow	●	●	●	●	●	○	○	○	○
	25	Yellow (Lemon)	●	●	●	●	●	●	○	○	○

【●】 Means that we carry regular stocks. Orders are accepted for the minimum quantity of 1 carton.

【○】 Means that colour is not available in the above sizes/textures/thickness but can become available at request subjected to a minimum order quantity of 500m<sup>2</sup> (Customers must purchase any extra materials obtained in 1st quality for these customised orders, until the maximum of 10% of the ordered quantity).

If there is an enquiry for a small quantity of a specific colour/size/texture/thickness/shape that is not in the above list of regular stocks, please contact us to check if there is any material left from past productions.

# Sizes & Shapes Smooth Textures

M(cm) / W(mm)

10 x 10 Loose



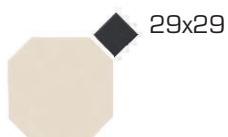
96x96x8

10 x 10 on mesh  
Sheet 30x30 (4 mm joint)



296x296x8

10 x 10 Octagon



96x96x8

10 x 10 Octagon with Dot 3x3  
Sheet 30x30 (4 mm joint)



296x296x8

10 x 10 Hexagon



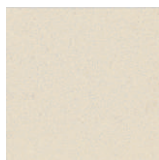
100x115x8

7.5 x 15



71x146x8

15 x 15



146x146x8

10 x 30



96x296x8

# Sizes Textured Surfaces

M(cm) / W(mm)

**RT**

10 x 10



96x96x8.5

15 x 15



146x146x8.5

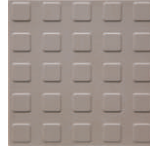
**SS**

10 x 10



96x96x8.5

15 x 15



146x146x8.5

**RC**

10 x 10



96x96x8.5

15 x 15



146x146x8.5

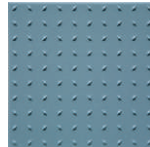
**DD**

10 x 10



96x96x8.5

15 x 15

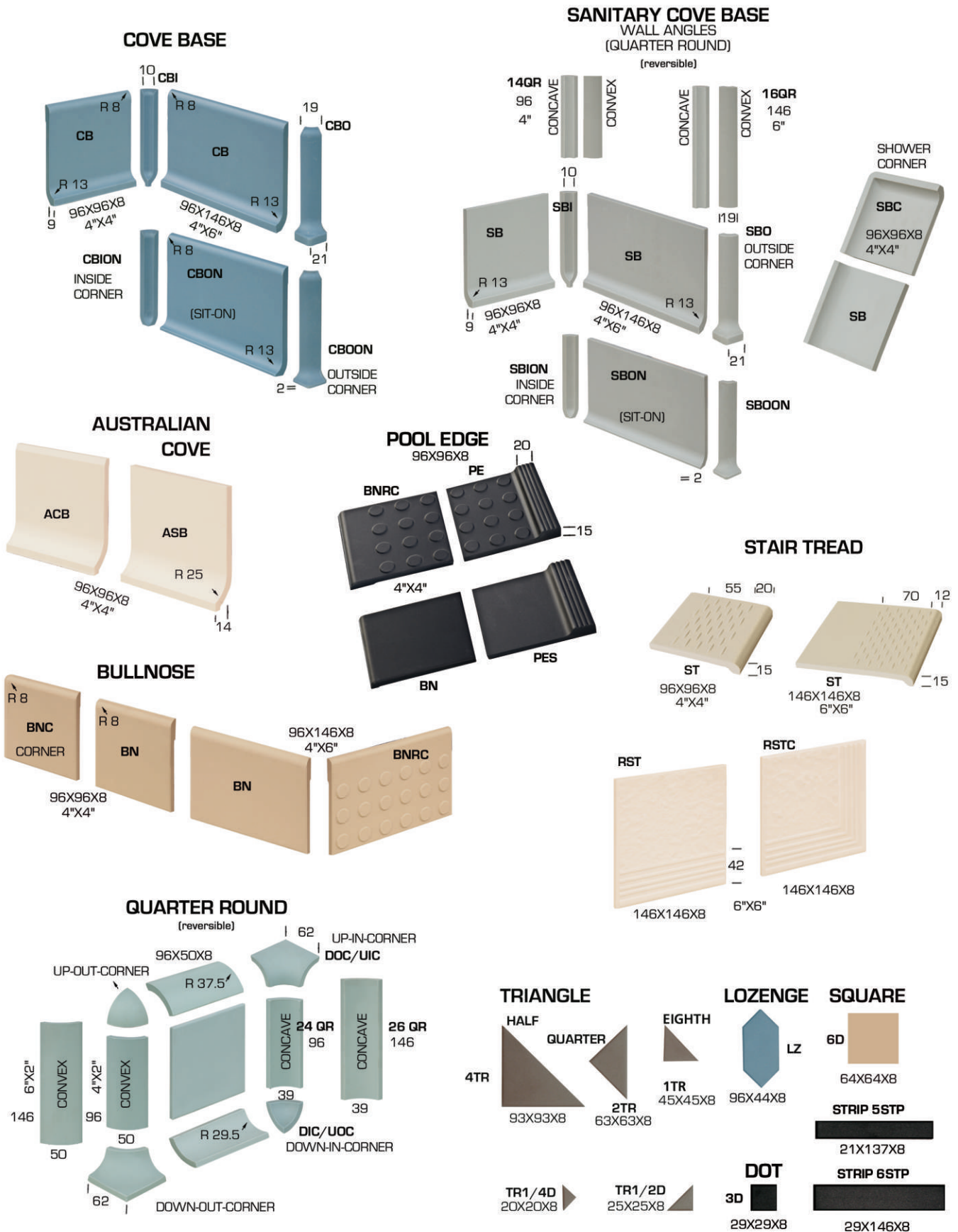


146x146x8.5



# Trim Pieces

(mm)



NOTE: Trim Pieces are intended to be used as finishing pieces, matching only with TOPCER field tiles.

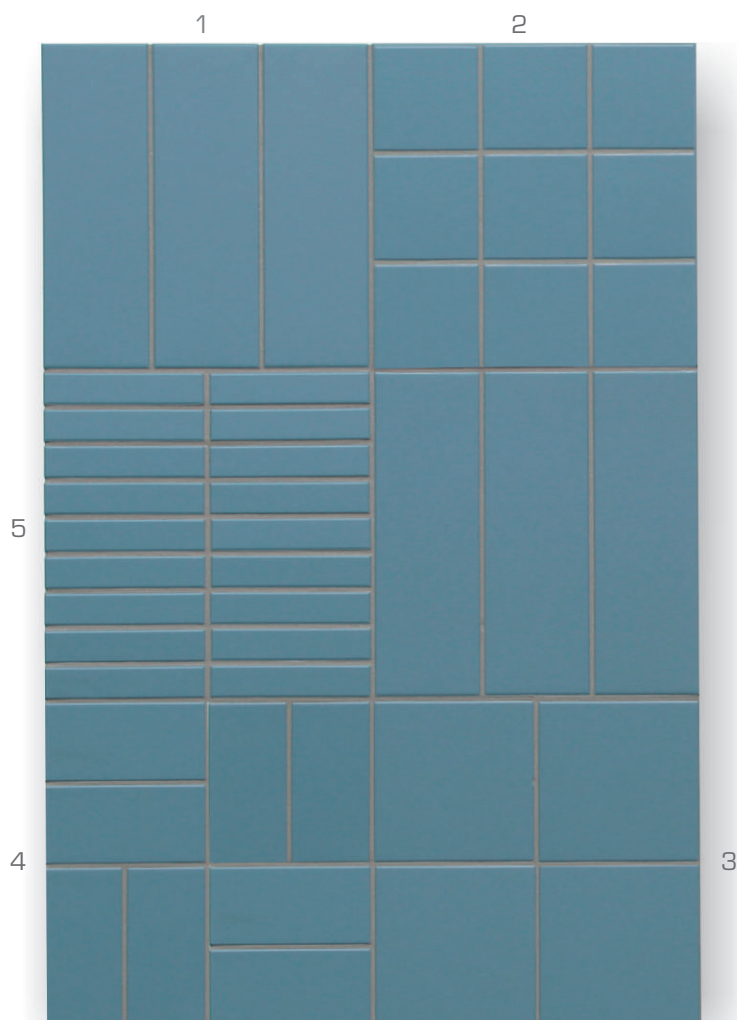
\* Australian Coves, BNRC, PE and PES pieces are not stocked in all colours. Orders for colours not in stock are only accepted for minimum of 500 pieces.



• Orders for Stair Treads ST and RST size 30x30 (296x296x8,5mm), RST and RSTC size 15x15 (146x146x8mm) are only accepted after stock availability confirmation.

# Modular Sizes

(4mm standard joints)



1 - 4"x12" — 10x30 (96x296x8mm)

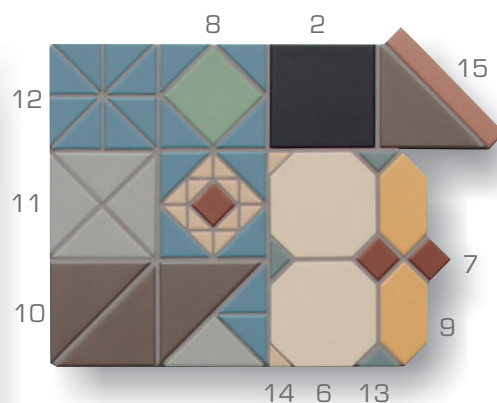
2 - 4"x4" — 10x10 (96x96x8mm)

3 - 6"x6" — 15x15 (146x146x8mm)

4 - 3"x6" — 7,5x15 (71x146x8mm)

5 - 6STP — 29x146x8mm (MIAMI 30x30)

6 - OCT — 10x10 (96x96x8mm)



7 - 3D — 29x29x8mm

8 - 6D — 64x64x8mm

9 - LZ — 96x44x8mm

10 - 4TR — 93x93x8mm

11 - 2TR — 63x63x8mm

12 - 1TR — 45x45x8mm

13 - TR1/2D — 25x25x8mm

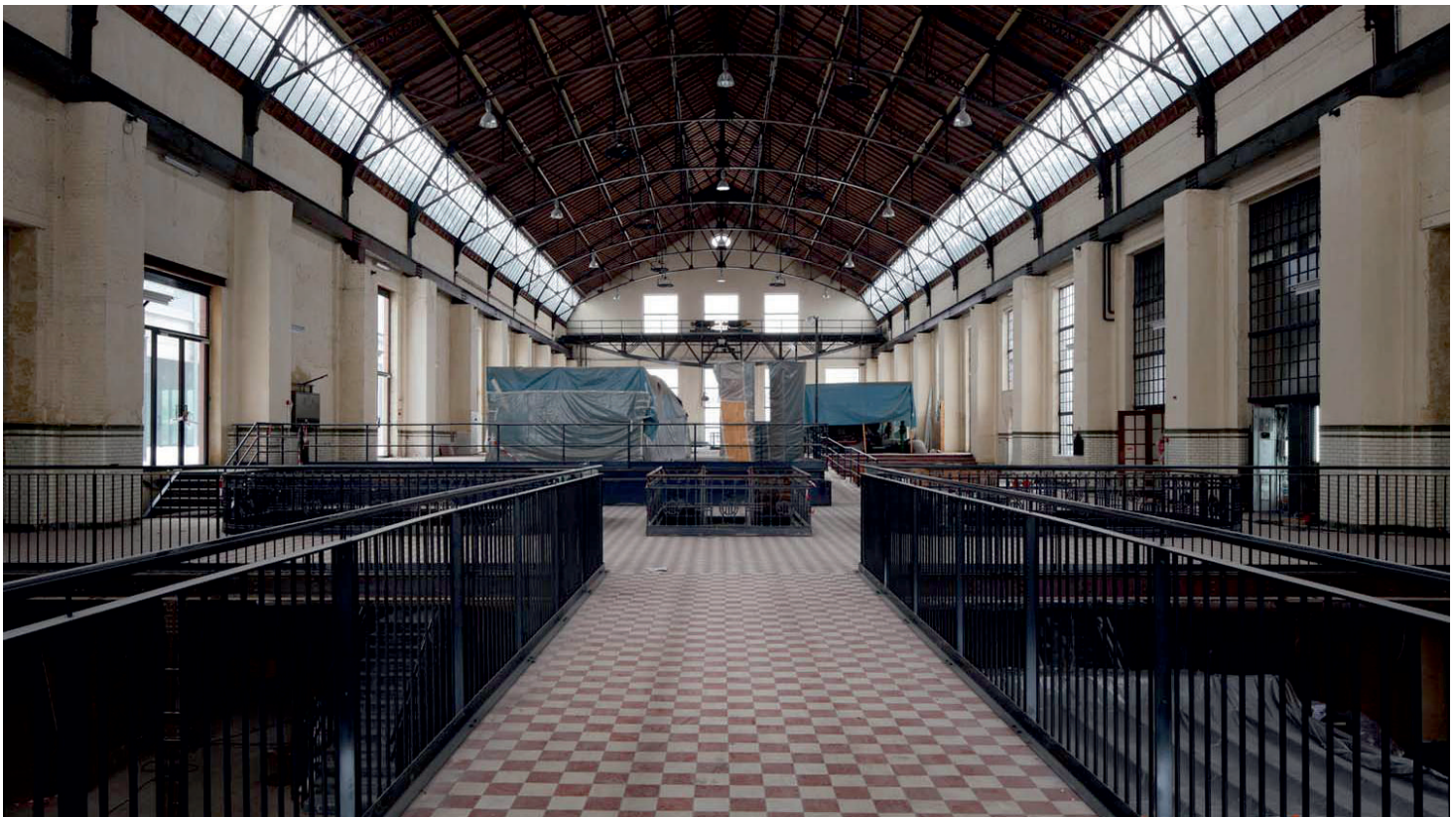
14 - TR1/4D — 20x20x8mm

15 - 5STP — 21x137x8mm





OPZ - Geel, Belgium



C-Mine - Genk, Belgium





WZC Menos - Genk, Belgium



St. Joseph Hospital - Berlin, Germany





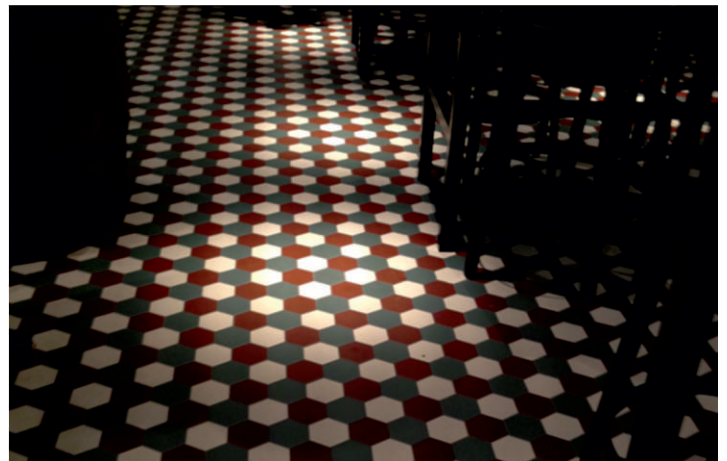
Telenet HQ - Mechelen, Belgium



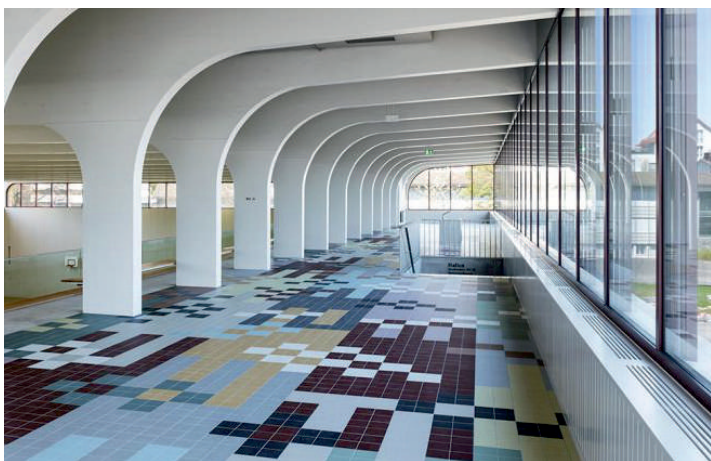
Story Ravintola - Helsinki, Finland



Boulangerie Paul - Orly, France



Restaurant Bar, Sweden



Multipurpose Hall Wetzikon. Switzerland



Nando's Restaurant - Colchester, UK

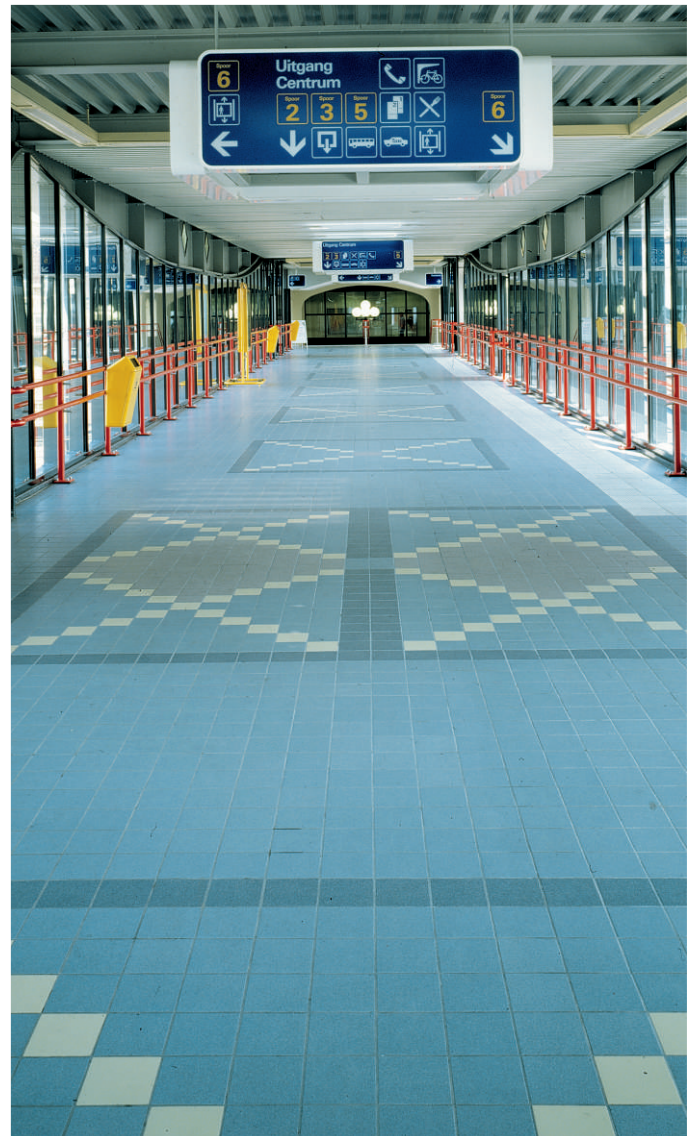




Fire brigade premises - Lisse, the Netherlands



Cabrillo Boulevard - Santa Barbara, CA - USA



Woerden station, the Netherlands



Headquarters "Gasuni" - Groningen, the Netherlands





Lido, Latvia



Fruehauf, Germany





Youth Hostel - Kortrijk, Belgium



Private residence - Milan, Italy



Restaurant Vertigo - New York, USA



Casa da Música - Oporto, Portugal



Comprehensive school - Utrecht, the Netherlands



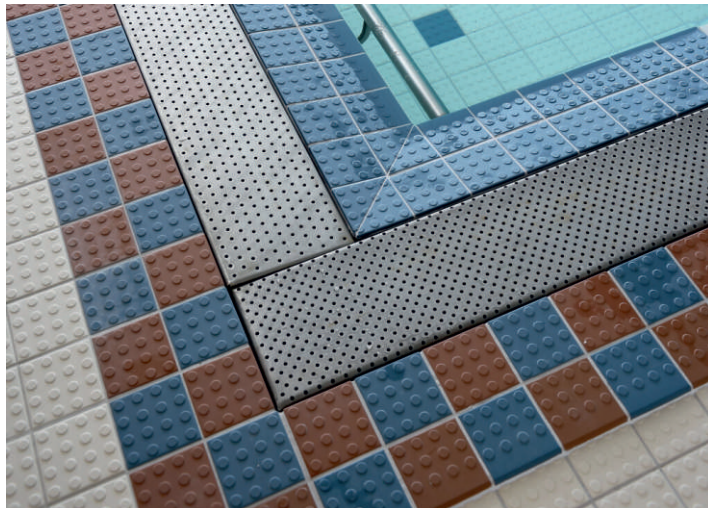
Gelredome Stadium - Arnhem, the Netherlands



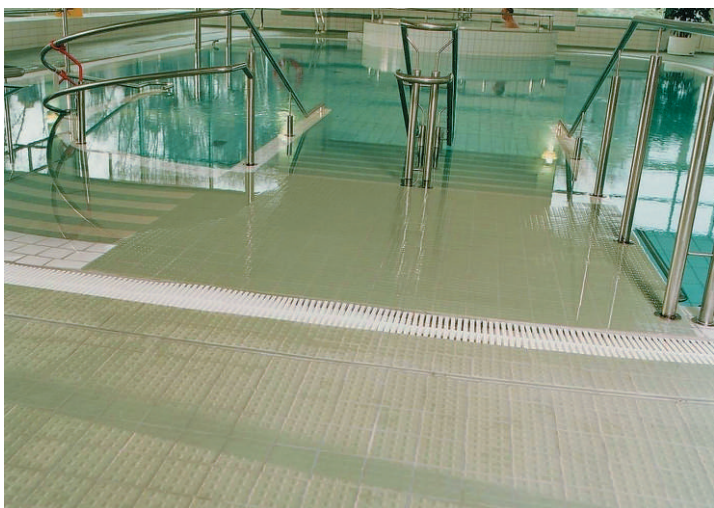
# Textured



Swimming Pool Complex - Vetelin, Finland



Swimming Pool Complex - Aulanko, Finland



Municipal Swimming Pool - Tammisaari, Finland



Kinsmead Pool, UK





Thermal Spa - Luso, Portugal

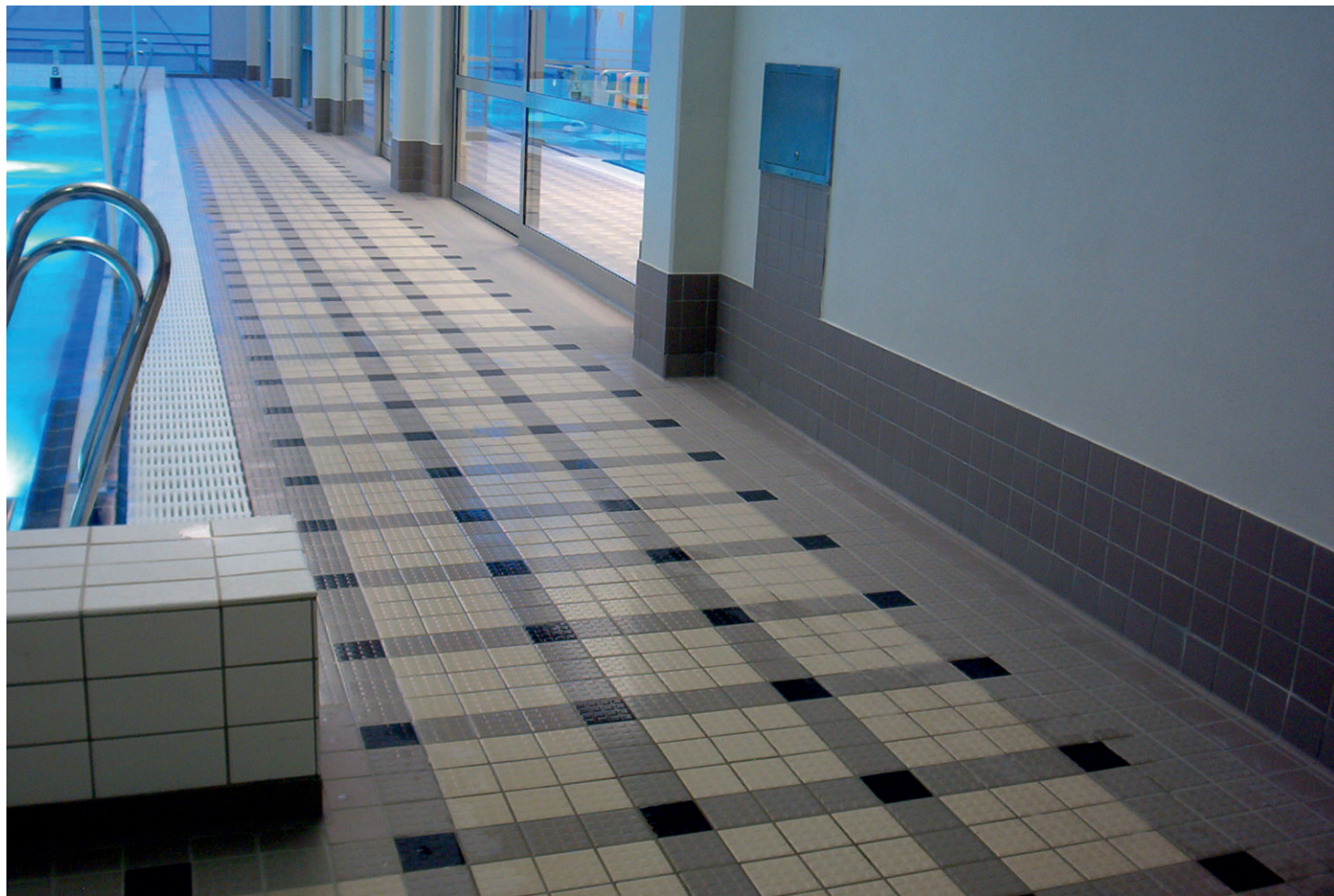


Caribia Hotel - Turku, Finland

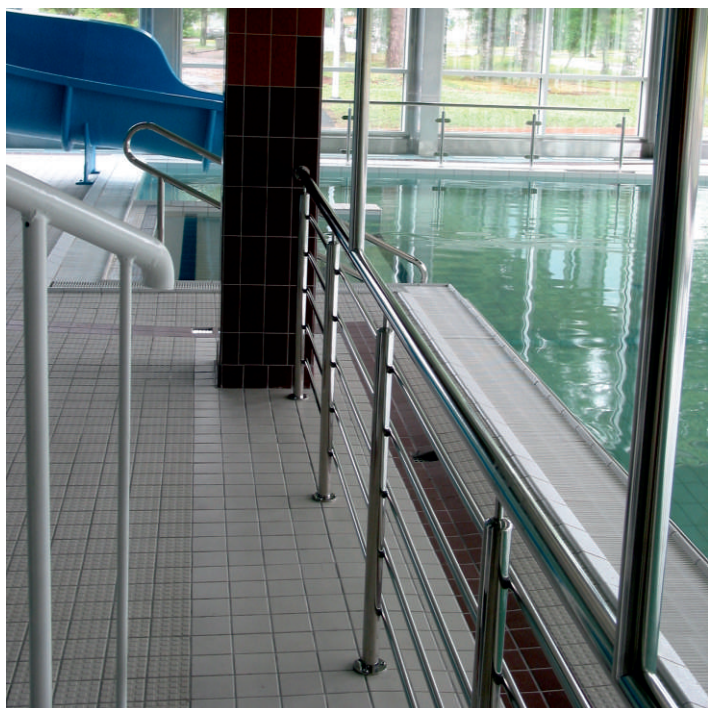


Thermal Spa - Cabeço de Vide, Portugal





Mariebad Spa & Bad - Alands, Finland



Swimming Pool Complex - Ulvila, Finland



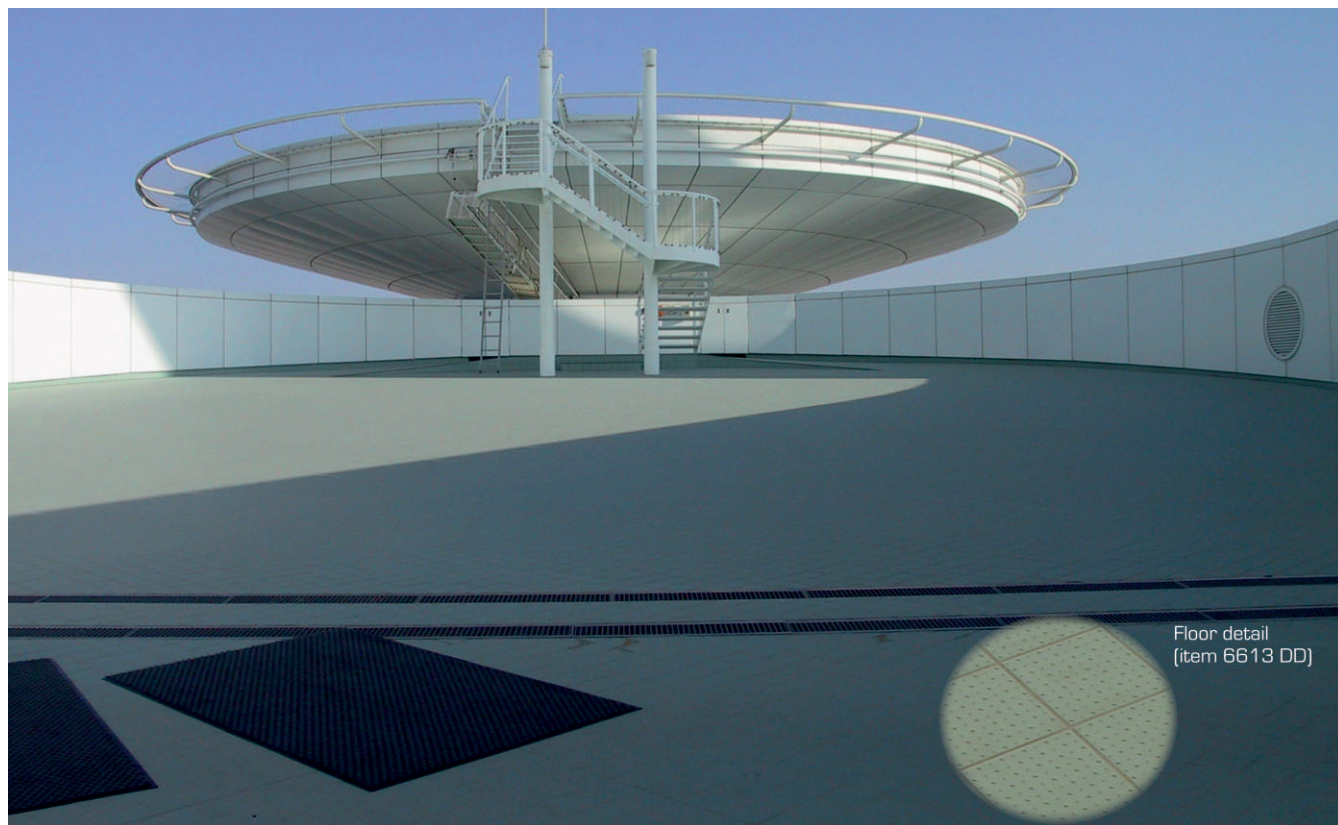


Swimming Pool Complex - Someron, Finland



Swimming Pool Complex - Someron, Finland





Burj Al Arab Helipad - Dubai, UAE



Centro Mariano - Fátima, Portugal



# Packing

THICKNESS	CARTON / BOX					PALLET				
	Sizes		Pieces	Sq.mts	Sheets 30x30	Measurements [cm]	Cartons	Sq.mts	Gross Weight (kgs)	
8 mm	10x10 4"x4"	Mesh mounted								
		SMOOTH	126	1.26	14	120x100x78 H (B)	60	75.60	1290	
		DD	"	"	"	"	"	"	1220	
		RC	"	"	"	"	"	"	1260	
		RT	"	"	"	"	"	"	1280	
		SS	"	"	"	"	"	"	1300	
		OCT with DOT	"	"	"	120x100x94 H (B)	54	68.04	1170	
		Loose								
		SMOOTH	100	1.00	-	120x80x65 H (A)	60	60	1050	
		OCT	"	"	-	"	"	"	940	
		DD	"	"	-	120x80x75 H (A)	"	"	990	
		RC	"	"	-	"	"	"	1000	
		RT	"	"	-	"	"	"	1010	
		SS	"	"	-	"	"	"	1020	
		HEXAGON	"	0.92	-	120x80x80 H (A)	54	49.68	890	
	7.5x15 3"x6"	Loose								
		SMOOTH	100	1.125	-	120x80x80 H (A)	60	67.50	1170	
	15x15 6"x6"	Loose								
		SMOOTH	50	1.125	-	120x80x80 H (A)	60	67.50	1180	
		DD	"	"	-	120x80x90 H (A)	65	73.125	1270	
		RC	"	"	-	"	"	"	1290	
		RT	"	"	-	"	"	"	1290	
		SS	"	"	-	"	"	"	1340	
		Loose								
		12 mm	SMOOTH	34	0.765	-	120x80x90 H (A)	75	57.375	1490
			DD	36	0.81	-	"	65	52.65	1360
			RC	"	"	-	"	"	"	1380
RT	"		"	-	"	"	"	1400		
SS	"		"	-	"	"	"	1410		
8 mm	10x30 4"x12"	Loose								
		SMOOTH	34	1.02	-	120x80x75 H (A)	60	61.2	1060	
	30x30 12"x12"	Loose								
		SMOOTH	11	0.99	-	120x80x75 H (A)	60	59.40	1150	
		RT	"	"	-	"	"	1090		

			20 FEET CONTAINER				TRUCK / CAMION	
			19 tons		21.5 tons		24 tons	
THICKNESS	Sizes		Pallet	Sq.mts.	Pallet	Sq.mts.	Pallet	Sq.mts.
8 mm	10x10 4"x4"	Mesh mounted						
		SMOOTH, DD, RC, RT, SS	14 (B)	1058.4	16 (B)	1209.6	18 (B)	1360.8
		Loose						
		SMOOTH	18 (A)	1080	21 (A)	1260	23 (A)	1380
	7.5x15 / 3"x6" 15x15 / 6"x6"	DD, RC, RT, SS	18 (A)	1080	21 (A)	1260	23 (A)	1380
		Loose						
		SMOOTH	16 (A)	1080	18 (A)	1215	20 (A)	1350
	15x15 6"x6"	Loose						
		DD, RC, RT, SS	14 (A)	1023.75	16 (A)	1170	18 (A)	1316.25
	10x30 4"x12"	Loose						
		SMOOTH	18 (A)	1101.6	21 (A)	1285.2	22 (A)	1346.4
	30x30 12"x12"	Loose						
		SMOOTH, RT	17 (A)	1009.8	19 (A)	1128.6	21 (A)	1247.4

Detailed packing of all TopCer products is available at  
<http://www.topcer.com/> / [General Data](#) / [Detailed Packing](#)

- (A) EURO PALLET - EPAL 1 — size 1200x800mm (aprox 27 Kg)  
 (B) EURO PALLET - EPAL 2 — size 1200x1000mm (aprox 30 Kg)



# Technical Data

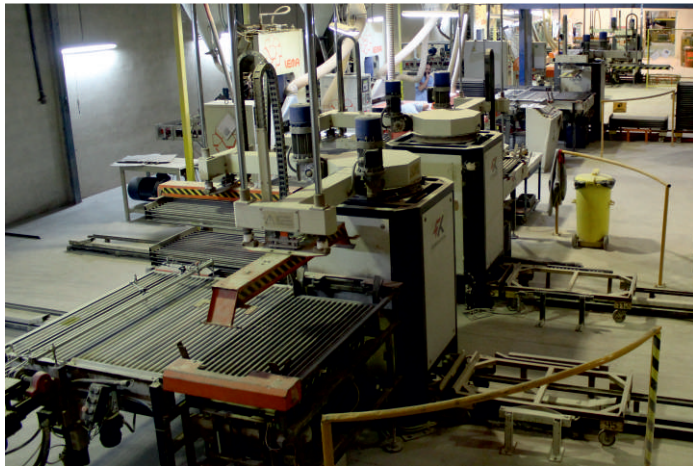
Unglazed porcelain tiles — ISO 13006 and EN 14411 - Annex G - Group Bla								
SIZES:		M[=N] W	10x10 96x96x8	10x30 96x296x8	7.5x15 71x146x8	15x15 146x146x8	30x30 296x296x8.5	DESIGNING COMPONENTS <sup>a)</sup>
a) Including 6STP (W29x146x8), 5STP (W21x137x8), 6D (W64x64x8), 3D (W29x29x8), LZ (W96x44x52x8), TR (W93x93x8, W64x64x8, W45x45x8, W25x25x8 y W20x20x8)								
PHYSICAL PROPERTIES		TEST STANDARD		REQUIREMENTS			TOPCER VALUE	
DIMENSION AND SURFACE QUALITY:				N < 7 cm	7 cm≤N<15 cm	N≥15 cm		
Length and width		ISO 10545-2		± 0,5 mm	± 0,9 mm	± 0,6% / ± 2,0 mm		Conforms
Thickness		ISO 10545-2		± 0,5 mm	± 0,5 mm	± 5,0% / ± 0,5 mm		Conforms
Straightness of sides		ISO 10545-2		No testing	± 0,8 mm	± 0,5% / ± 1,5 mm		Conforms
Rectangularity		ISO 10545-2		No testing	± 0,8 mm	± 0,5% / ± 2,0 mm		Conforms
Surface flatness, (curvature and warpage)		ISO 10545-2		No testing	± 0,8 mm	± 0,5% / ± 2,0 mm		Conforms
Surface quality		ISO 10545-2			≥ 95%			Conforms
PRODUCT QUALITY AND DURABILITY:								
Water absorption		ISO 10545-3			≤ 0,5%			Conforms
Breaking strength		ISO 10545-4			≥ 1300 N			≥ 1800 N
Modulus of rupture		ISO 10545-4			≥ 35 N/mm²			≥ 50 N/mm²
Impact resistance		ISO 10545-5			Declared Value			No visible defects
Resistance to deep abrasion (unglazed tiles)		ISO 10545-6			≤ 175 mm³			123 mm³
Coefficient of linear thermal expansion		ISO 10545-8			Declared Value			5,6 x 10 <sup>-6</sup> °C <sup>-1</sup>
Thermal shock resistance		ISO 10545-9			No visible defects			Conforms
Moisture expansion		ISO 10545-10			Declared Value			< 0,1 mm/m
Frost resistance		ISO 10545-12			No visible defects			Conforms
Resistance to chemicals		ISO 10545-13			No visible defects			Conforms
Resistance to staining		ISO 10545-14			No permanent staining			Conforms
SLIP RESISTANCE: (For the designing components, the slip resistance is equal or better than size 10x10 smooth)								
Areas with footwear	Dynamic Coefficient of Friction (DCOF)							
	ASTM - ANSI A 137.1-2012 (INTERTEK - CA)			0.62	10x10 / 4"x4 Plain Finish (smooth)			
				0.65	10x10 / 4"x4 Riven (RT) finish			
	AS 4586:2013 Apendix B (ATTAR - AU)			0.65	10x10 / 4"x4 Plain Finish (smooth)			
	Wet Pendulum Slip Resistance							
	AS 4586:2013 Apendix A (ATTAR - AU)			47	10x10 / 4"x4 Plain Finish (smooth)			
	VALUES:							
	Pendulum (Slider 96)		DRY	WET	SIZES / SURFACE TEXTURE			
	CEN/TS 16165 : 2016 (Annex C)		62 - 71	42 - 53	10x10; 7,5x15; 15x15; 10x30; 30x30 Plain finish (smooth)			
			65	45	10x10 Octagon with 3x3 dot Plain finish (smooth)			
			63	39	10x10 Hexagon Plain finish (smooth)			
			81 / 85	73 / 75	10x10 Round studs (RC) finish / 15x15 Round studs (RC) finish			
			83 / 85	71 / 74	10x10 Square studs (SS) finish / 15x15 Square studs (SS) finish			
			85 / 88	70 / 79	10x10 Diamond studs (DD) finish / 15x15 Diamond studs (DD) finish			
			63 / 67	53 / 55	10x10 Riven (RT) finish / 15x15 Riven (RT) finish			
	Pendulum (Slider 57)		PVT	Class	SIZES / SURFACE TEXTURE			
	UNE 41901 : 2017 EX (SPAIN)		37 / 39	2	10x10 colour 16 / 10x10 colour 28 Plain finish (smooth)			
			29 - 32	1	10x10 other colours; 10x10 Octagon; 10x10 Hexagon Plain finish (smooth)			
			26 - 35	1	7,5x15; 15x15; 10x30; 30x30 Plain finish (smooth)			
			57 / 53	3	10x10 Round studs (RC) finish / 15x15 Round studs (RC) finish			
			64 / 58	3	10x10 Square studs (SS) finish / 15x15 Square studs (SS) finish			
			51 / 56	3	10x10 Diamond studs (DD) finish / 15x15 Diamond studs (DD) finish			
			47 / 54	3	10x10 Riven (RT) finish / 15x15 Riven (RT) finish			
	Ramp Test		VALUES:					
	DIN 51130 (HS-KOBLENZ - DE)		6° ≤ R9 ≤ 10°	30x30 Plain finish (smooth)				
			10° < R10 ≤ 19°	10x10 (also Hexagon and Octagon) / 10x30 / 15x15 Plain finish (smooth)				
			19° < R11 ≤ 27°	10x10 / 15x15 Square studs (SS) and in Round studs (RC)				
			30x30 Rubber (R), 30x30 Riven (RT)					
		27° R12 ≤ 35°	10x10 / 15x15 Riven (RT) and in Diamond studs (DD)					
Displacement volume / Expulsion space	DIN 51130/BGR 181 (HS-KOBLENZ - DE)	V5	15x15 Square studs (SS) and Riven (RT)					
		V6	10x10 Square studs (SS) and Riven (RT), 15x15 Round studs (RC)					
		V7	15x15 Diamond studs (DD)					
		V8	10x10 Round studs (RC)					
Areas with bare-footed	DIN 51097 (HS-KOBLENZ - DE)	12° ≤ A < 18°	30x30 Plain finish (smooth)					
		18° ≤ B < 24°	10x10 (also Hexagon and Octagon) / 10x30 / 15x15 Plain finish (smooth)					
		30x30 Rubber (R), 30x30 Riven (RT)						
		(CERAM - UK)	18° ≤ B < 24°	10x10 / 15x15 Plain finish (smooth)				
		(CERAM - UK)	C ≥ 24°	15x15 Round studs (RC)+Diamond studs (DD)+Riven (RT)+Square studs (SS)				
	(HS-KOBLENZ - DE)	C ≥ 24°	10x10 / 15x15 Round studs (RC)+Diamond studs (DD)+Riven (RT)+Square studs (SS)					



# T o p C e r



Aerial view



Pressing



Firing



Lab control & testing



Selection



# The Choice of Architects



Cabrillo Boulevard - Santa Barbara, CA - USA

**EXPORT OFFICE:**

Largo da Estação, 8 - 2<sup>ª</sup> Fte - 2750-340 Cascais • Portugal  
Tel. +351 214 844 788/9  
Email: [LX@topcer.com](mailto:LX@topcer.com)

**FACTORY:**

Rua do Monte Grande 10, Zona Industrial de Oitã  
3770-068 Oitã • Portugal  
Tel. +351 234 722 395  
Email: [av@topcer.com](mailto:av@topcer.com)

